

778194



Jay Flight SLX



Serial #: 1UJBC0BL2R1YZ0242  
Model: 210QB JAY FLIGHT SLX TT

Model Year: 2024 Dealer Name: RV One Superstores - Raleigh  
805 OLD ROBERTS ROAD  
Benson, NC 27504  
USA

Standard Equipment

THE FOLLOWING ITEMS ARE STANDARD ON THIS MODEL  
AT NO EXTRA CHARGE

- EXTERIOR
- Axles with electric, self-adjusting brakes and easy-lube hubs
  - Fully-integrated A-frame
  - Galvanized-steel, impact resistant wheel wells
  - Magnum Truss™ Roof System
  - Seamless one piece roof material
  - Large exterior downspouts
  - 30-amp service
  - Exterior cable TV hookup
  - LP quick connect (outside grill prep)
  - 5,000 BTU wall mount A/C (single axle models)
  - Nitrogen filled radial tires

- STX EDITION
- 30 lb. LP bottle
  - Wide-stance axle
  - Goodyear® off-road tires
  - Enclosed underbelly
  - Double entry step
  - Stabilizer jacks (4)
  - Aluminum rims
  - Power tongue jack
  - Deluxe graphics package
  - Powder coated wheel fenders

- INTERIOR
- Solid hardwood cabinet doors with screwed stile construction and hidden hinges
  - Vinyl flooring throughout
  - Digital TV antenna
  - Residential-style kitchen countertops
  - High rise kitchen faucet
  - Heavy-duty, 75 lb., full-extension, steel ball-bearing drawer guides
  - Plywood bed platforms
  - Queen mattress (select models)
  - 300 lb. rated single bunk beds
  - 600 lb. rated double bunk beds
  - Marine-grade toilet with foot flush
  - Shower curtain with curved shower track (select models)
  - Wood-trimmed mirror in bathroom

- CUSTOMER VALUE PACKAGE (Mandatory)
- Solid Step® entry steps
  - On-demand tankless water heater
  - Power awning with LED lights
  - Marine grade exterior stereo speakers
  - Stabilizer jacks
  - Spare tire with cover
  - Keyed-Alike™ entry and baggage doors
  - Large folding entry door grab handle
  - Window shades
  - Range hood
  - 8 cu. ft. 12V refrigerator
  - Microwave oven
  - Fitted bed sheet (N/A 154BH)
  - Bathroom skylight
  - Tub/shower surround
  - Backup camera prep
  - Detachable power cord
  - G20 dark tinted privacy windows
  - Bathroom vent
  - LED interior and exterior lights
  - Entry door with window and shade prep
  - AM/FM/Bluetooth® stereo

Optional Equipment

OPTIONAL EQUIPMENT INSTALLED ON THIS VEHICLE  
BY MANUFACTURER

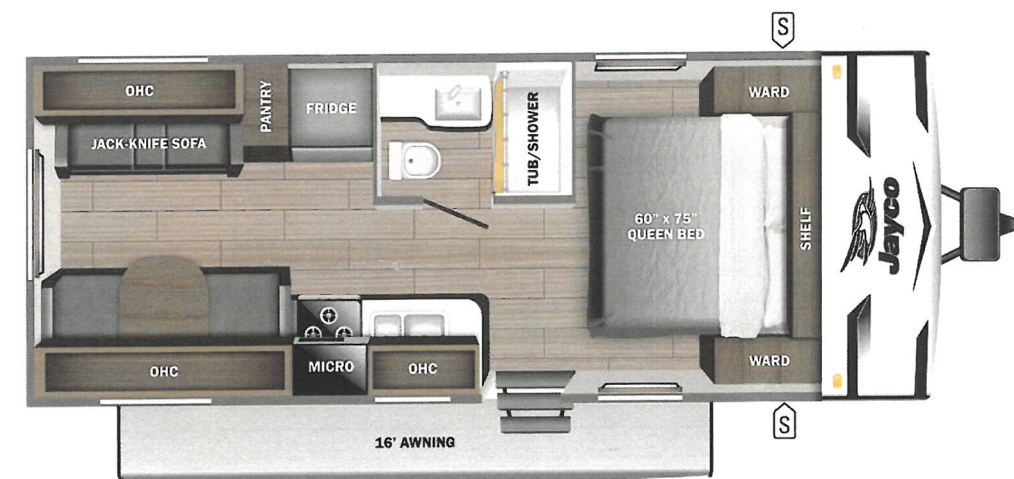
Base price	27,906.00
USA STANDARDS	n/c
CUSTOMER VALUE PACKAGE	5,250.00
13,500 BTU ROOF MOUNTED AC	593.00
STANDARD RADIAL TIRES	n/c

UNIT TOTAL 33,749.00

DEALER INSTALLED OPTIONS

Manufacturer's Suggested Retail Price \$33,749.00

TOTAL AMOUNT DOES NOT INCLUDE STATE AND LOCAL TAXES OR LICENSE FEES. THE PRICE SHOWN ABOVE MAY OR MAY NOT BE REPRESENTATIVE OF THE ACTUAL SELLING PRICE OF SIMILAR RECREATIONAL VEHICLES IN YOUR AREA.



UVW  
4320 lbs



Sleeps



Length  
25' 8"

DIMENSIONS

Exterior height:.....126.00"

Exterior width:.....96.00"

WEIGHTS

GVWR:.....5500

GAWR (front):.....3500

GAWR (rear):.....3500

Approx. Gross Cargo Carrying Capacity(GCCC):.....1180

TIRES

Tire size (front):.....ST205/75R14D

Tire size (mid):.....

Tire size (rear):.....ST205/75R14D

Tire size (spare):.....ST205/75R14D

CAPACITIES

Fresh water tank (gals.):...52.00

Gray water tank (gals.):...39.00

Black water/toilet tank (gals.):.....33.00

Propane (lbs.):.....40

Propane (gals.):.....9

Water heater (gals.):.....0.00

SEATING & SLEEPING

\*\*\*Some dimensions may be rounded and may vary from the actual dimensions\*\*\*

\*\*\*Weights may be estimated calculations and may vary from the actual weight

- refer to the vehicle weight labels for actual weights\*\*\*

Floorplans, features and specifications are subject to change without notice.

