



Serial #: 1UJCA0BN0P1PD0137

Model: 24RE EAGLE HT FW

Model Year: 2023 Dealer Name: RV ONE SUPERSTORES TAMPA

4656 MCINTOSH ROAD  
DOVER, FL 33527  
USA



### Optional Equipment

THE FOLLOWING ITEMS ARE STANDARD ON THIS MODEL  
AT NO EXTRA CHARGE

OPTIONAL EQUIPMENT INSTALLED ON THIS VEHICLE  
BY MANUFACTURER

EXTERIOR

- Sterilized, autoclaved and flame treated and Valcortron animals produced fibreglass exterior walls (including ear wall and side body walls)
- Magnium Incess Rod System with one piece heat-resistant material with 20 year warranty
- Chemical Shield Zero-Degree Insulation
- Fully enclosed and heated underbody (ducts)
- 55,000 BTU output furnace
- Double layer fibreglass hot insulation in ceiling and floor
- Double sided radiant barrier insulation (roof, floor, door)

## INTERIOR

- Solid aluminum solder sealed
- Heavy-duty, 70 lb. decontamination, drawers and trim
- Trayways and grooves fitted with floor decking
- Residential vinyl flooring (available in the USA)
- LED indicator lights (multiple locations)
- LED warning siren (multiple locations)
- Select seating (select models)
- Stainless steel ductwork
- Exhaust fan with pulpit cap
- Extra 20V power outlets in kitchen and side rooms (where available)
- Gas-strutted hood designed and pivoted
- Infrared grease traps (multiple locations)
- Carbon monoxide and LP detector
- Bathroom skylight
- LED indicator medicine cabinet with custom-fitted mirror
- Blue LED nightlights in bathroom
- Porcelain toilet flush valve

- MORryde® StepAbove™ entrance steps (main

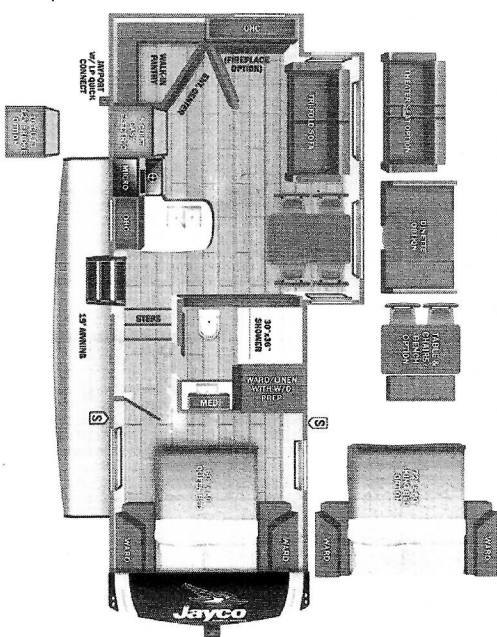
- [illegible]

UNIT TOTAL

76,111.00

**Manufacturer's Suggested Retail Price** \$76,111.00

TOTAL AMOUNT DOES NOT INCLUDE STATE AND LOCAL TAXES OR LICENSE FEES. THE PRICE SHOWN ABOVE MAY OR MAY NOT BE REPRESENTATIVE OF THE ACTUAL SELLING PRICE OF SIMILAR RECREATIONAL VEHICLES IN YOUR AREA.



**UWW**  
8247 lbs

## Sleeps

**Length**  
29' 1.75"

## DIMENSIONS

**DIMENSIONS** **CAPACITIES**

## WEIGHTS

Black water/toilet tank

Approx. 6

Approx. Gross Cargo Carrying	Water heater (gals.):.....0.15
------------------------------	--------------------------------

## Capacity (

Capacity (GCC): .....1748 **SEATING & SLEEPING**

## TIRES

## TIRES

## Tire size

Tire size (front):.....ST225/75R15E

## Tire size

Tire size (mid) : .....

## Tire size

Tire size (year) :.....ST225/75R15E

\*\*\*Some dimensions may be rounded and may vary from the actual dimensions\*\*\*  
 \*\*\*Weights may be estimated calculations and may vary from the actual weight  
 - refer to the vehicle weight labels for actual weights\*\*\*  
 Floorplans, features and specifications are subject to change without notice.

# 2+3

YEAR YEAR  
LIMITED STRUCTURAL  
WARRANTY