



White Hawk



Serial #: 1UJB0BS6N14A0498
 Model: 29BH WHITE HAWK TT

Model Year: 2022 Dealer Name: ALBANY RV
 48 RENSSELAER AVE
 LATHAM, NY 12110
 USA

Standard Equipment

Optional Equipment

THE FOLLOWING ITEMS ARE STANDARD ON THIS MODEL AT NO EXTRA CHARGE

OPTIONAL EQUIPMENT INSTALLED ON THIS VEHICLE BY MANUFACTURER

- EXTERIOR**
- Aerodynamic, rounded front profile with front diamond plate
 - Stronghold VBL™ vacuum-bonded, laminated side and rear walls (including slideout room walls)
 - Magnum Truss™ Roof System with seamless DiFlex III material
 - 5/8 in. tongue-and-groove plywood decked flooring
 - American-made frame with integrated A-frame
 - G20 dark tinted safety-glass windows
 - 30 in. friction-hinged main entry doors (select models)
 - Swing out grab handle
 - Exterior TV bracket with 120V and cable outlets
 - Outdoor camp kitchen with embossed metal countertops (select models)
 - Slam latches on front pass-through storage doors (select models)
 - Marine-grade exterior speakers with blue LED accent lighting (2)
 - Galvanized steel and impact-resistant wheel wells
 - 30-amp service
 - Stabilizer jacks with sand pads (4)
 - Mounted camera bracket for pre-wired side and rear backup prep
 - Keyed-Alike™ lock system
 - Detachable power cord
 - A-frame mounted solar prep
 - Battery quick disconnect
 - Black tank flush
 - ABS propane bottle cover
 - Automotive-style aluminum rims
 - Spare tire with cover
 - Inverter pre-wire

- LUXURY PACKAGE (MANDATORY)**
- Climate Shield™ zero-degree tested weather protection:
 - Fully enclosed and heated underbelly (ducted)
 - 35,000 BTU output furnace
 - Double layer fiberglass batt insulation in ceiling and floor
 - Double sided radiant barrier insulation (roof, floor, cap, and slide room floors)
 - PEX plumbing
 - Front molded fiberglass cap with automotive-style windshield and blue LED accent lighting
 - Frameless windows
 - Fold-down aluminum tread entry steps (main entry), aluminum tread entry steps (second entry, select models)
 - JaySMART™ (Safety Markers And Reverse Travel) LED lighting (patent-pending)
 - Roof-mount solar prep
 - Kitchen skylight with shade
 - Power roof vent (main living area)
 - JAYCOMMAND® "Smart RV" system with TPMS

- INTERIOR**
- Arched interior ceiling
 - LED lighting throughout
 - Electric fireplace (mandatory)
 - Directional and closeable central A/C vents
 - Plywood dinette, bunk and bed bases (applicable models)
 - Decorative wall clock in main living area (select models)
 - Residential vinyl flooring with cold crack resistance
 - High output auto-ignition 35,000 BTU furnace with wall thermostat
 - Front windshield with roller shade with radiant barrier backer
 - Solid hardwood, joined cabinets with screwed and glued lumbercore cabinet stiles
 - Deep, split bowl, stainless steel sink with high-rise, pull-out faucet and dry rack/sink cover combo
 - Decorative backsplash
 - Ball-bearing drawer guides with 75 lb. capacity
 - Wood panel fridge inserts
 - 60 in. x 80 in. queen bed (60 in. x 75 in. in Murphy bed models)
 - 72 in. x 80 in. king bed (standard on 30FLS & 32KBS)
 - Murphy bed design allowing pass-through exterior storage access (24MRB & 25MBH)
 - Fixed bunks with 120V outlet and corner shelf (bunk models only)
 - Jayco exclusive Teddy Bear "soft-touch" bunk mats (bunk models only)
 - 14 in. x 14 in. powered roof vents in bathroom and main bedroom
 - 360° Siphon® roof vent cap

- CUSTOMER VALUE PACKAGE (MANDATORY)**
- American-made nitro-filled Goodyear® radial tires with self-adjusting brakes (made in the USA)
 - Roof ladder
 - 6 gal. gas/electric DSI water heater
 - 55 gal. fresh water tank
 - 30 lb. propane bottles (2)
 - Outside shower
 - Power awning with LED light
 - Power tongue jack
 - Slide topper prep
 - LED TV
 - 14,500 BTU A/C
 - AM/FM/Bluetooth® stereo with speakers
 - 8 cu. ft. gas/electric refrigerator with stainless front panels
 - Oven with 3-burner recessed cooktop with glass cover
 - Microwave
 - Porcelain foot flush toilet
 - Showers with solid enclosures
 - Bathroom skylight

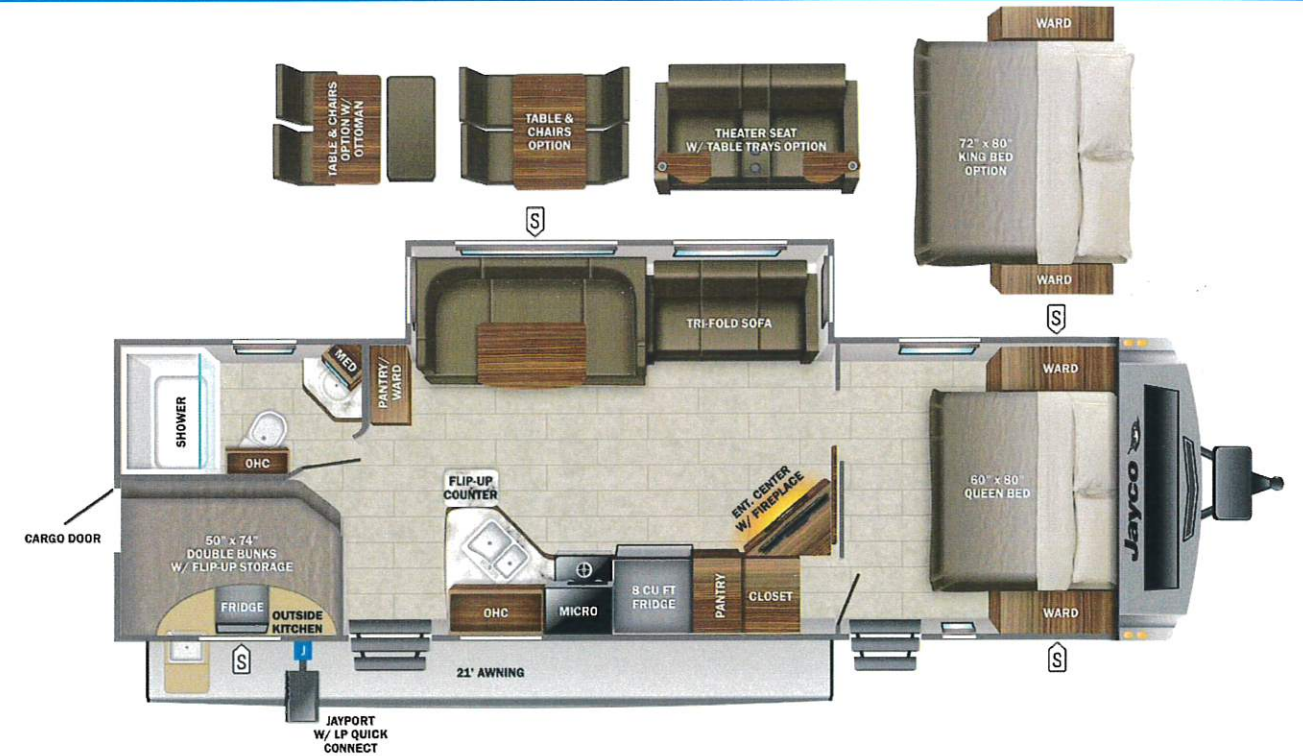
| | |
|-----------------------------|-----------|
| Base price | 50,267.00 |
| Modern Farmhouse | n/c |
| USA Standards | n/c |
| Customer Value Package | 5,250.00 |
| Luxury Package | 3,000.00 |
| Solar Power Package Prep | n/c |
| 2nd AC | 743.00 |
| 50 AMP Service | 353.00 |
| Fireplace | 338.00 |
| 10 Cu. Ft. 12v Refrigerator | 30.00 |
| Electric Stabilizer Jacks | 638.00 |
| Sofa | n/c |
| Dinette | n/c |
| Queen Bed | n/c |

UNIT TOTAL **60,619.00**

DEALER INSTALLED OPTIONS

Manufacturer's Suggested Retail Price \$60,619.00

TOTAL AMOUNT DOES NOT INCLUDE STATE AND LOCAL TAXES OR LICENSE FEES. THE PRICE SHOWN ABOVE MAY OR MAY NOT BE REPRESENTATIVE OF THE ACTUAL SELLING PRICE OF SIMILAR RECREATIONAL VEHICLES IN YOUR AREA.



lb **UVW**
7345 lbs

Sleeps
8-10

Length
34' 8.5"

DIMENSIONS

Exterior height:.....134.75"
 Exterior width:.....95.75"
WEIGHTS
 GVWR:.....8500
 GAWR (front):.....4400
 GAWR (rear):.....4400
 Approx. Gross Cargo Carrying Capacity (GCCC):.....1155

CAPACITIES

Fresh water tank (gals.):...55.00
 Gray water tank (gals.):...61.00
 Black water/toilet tank (gals.):...30.50
 Propane (lbs.):.....60
 Propane (gals.):.....14
 Water heater (gals.):.....6.00

SEATING & SLEEPING

TIRES

Tire size (front):.....ST225/75R15E
 Tire size (mid):.....
 Tire size (rear):.....ST225/75R15E
 Tire size (spare):.....ST225/75R15E

Some dimensions may be rounded and may vary from the actual dimensions
 Weights may be estimated calculations and may vary from the actual weight - refer to the vehicle weight labels for actual weights
 Floorplans, features and specifications are subject to change without notice.

